



[HOME](#) [CONTACT](#) [SITEMAP](#)

## chapter

About Us  
Board And Staff  
Committees  
Architect Members  
Allied Members  
Fellowship / Honors  
Membership Info

## programs

Event Registration  
Events Calendar  
ARE & IDP  
Continuing Education  
Design Awards  
Gala / Archifest  
Gallery AIA

## resources

News  
Newsletter  
Jobs/Resumes  
Products/Services  
Sponsor/Advertise  
For Architects  
For Clients  
For Emerging Professionals  
For Firms  
For Homeowners  
For Students  
For The Archi Enthusiast  
Women In Architecture  
Architecture Heritage Committee  
AIA TB Blog

## documents

Document & Book List  
Buy Documents & Books

## spotlight feature

### AIA TAMPA BAY RECOGNIZES DESIGN EXCELLENCE

The American Institute of Architects Tampa Bay Chapter announced the recipients of their 2008 design awards at an awards ceremony Saturday, June 28th at the Tampa Firefighter's Museum in downtown Tampa. Jurors Behzad B. Nakhjavan, Professor of Architecture and Daniel Bennett, FAIA, Dean, College of Architecture, Design and Construction at Auburn University, selected eleven out of sixty-nine total submissions to be recognized with awards of Merit and Honor for excellence in architectural design.

The top honor, **The H. Dean Rowe, FAIA Award** for Design Excellence, was presented to **Gould Evans** for their design of the **Hillsborough Community College Multipurpose Facility at the Southshore Campus** in Ruskin. The two-story facility includes general purpose classrooms, computer and physical science laboratories, a nursing laboratory as well as support services and office space. The building is organized to emphasize the three components of Education this institution will be teaching; Science, Language and Nursing. The landscape engages this center and defines the facility's circulation through an open-air courtyard, which links all of the 58,000 SF facility. The new Multi-Purpose Facility attempts to capture all of the good and useful things that the Florida environment has to offer and establishes a new expression for Florida Architecture.

[More project images](#)



Hillsborough Community College Multipurpose Facility, Gould Evans

Honor Awards were presented to two projects including the **Seybold Lofts**, designed by **Clemmons Architecture**. The 1926 Seybold Bakery building is a City of Tampa historic landmark. Located in Tampa's north Hyde Park neighborhood, a former bread factory, it was master-planned to include 33 lofts within the existing two-story building, a new four-story 16-unit condominium building, 12 three-story town homes, and four narrow-lot single-family homes. The main goals were to preserve and restore the building's exterior and maintain many of the industrial construction elements of the interior.

[More project images](#)



Seybold Lofts, Clemmons Architecture



Mumford Pool House, Jonathan Parks Architect

Also receiving an Honor Award was **Jonathan Parks Architect** for their design of the **Mumford Pool House**, a complement to a 1926 historic cottage. The design centered on creating an elegant backyard family area for the owners. Both being design professionals, they requested a pool house, pool and landscape layout that embraced a modern design and expanded living space. The design blurs the lines

between inside and out to create a backyard space that effortlessly flows and enhances the owner's lives. [More project images](#)

[BUY DOCUMENTS](#)

[EVENT CALENDAR](#)

[JOIN AIA TAMPA BAY](#)

[REGISTER FOR AN EVENT](#)

[FIND AN ARCHITECT](#)

ADVERTISEMENT

Find an  
architect  
search local firms

aia center

click here for  
more information



Tampa Fire Fighters Museum,  
Sherman and Associates

Merit Awards were presented to eight projects. **Sherman and Associates** were recognized for their restoration and addition to the **Tampa Fire Fighters Museum** in downtown Tampa. The original two-story, 12,000 SF building was expanded with a three-story, 4,600 SF addition, which was designed to complement and contrast with

the historic fire station. The interior and exterior of the historic structure were restored to their original condition.

[More project images](#)

#### Hoffman Architects

**P.A.** received a Merit Award for the **Hoffman's Residence**. The major design influence on the house was bipolar on several levels, radically split between the architect and biologist, husband and wife. The house is three stories with a workshop and garage on the ground level, the main living space on the second level, and a guest loft on the third level. It is located on Lake Tarpon in Tarpon Springs, FL.

[More project images](#)



Hoffman's Residence,  
Hoffman Architects P.A.



Richmond International Airport Terminal  
Expansion, Gresham,Smith & Partners

**Gresham Smith and Partners** were recognized with a Merit Award for their **Richmond International Airport Terminal Expansion** project. Construction began in 2005. The new terminal building currently supports nine airlines, with ample space for additional carriers. It is made up of 28,000 SF of glass and 100,000 SF of terrazzo flooring. [More project images](#)

A Merit Award was also presented to **Ai Collaborative, Inc.** for the **Glacial Water & Ice Manufacturing Plant**. The project was necessitated by the owner's creation of a new brand of locally produced drinking water and bagged ice and to provide a facility design that reaches beyond a simple utilitarian structure. [More project images](#)



Glacial Water & Ice  
Manufacturing Plant,  
Ai Collaborative, Inc.



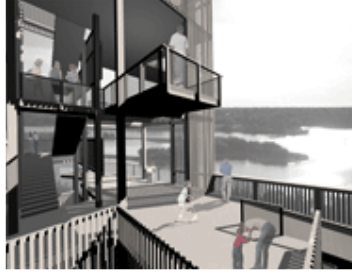
Suncoast Federal Credit Union's  
Information Technology Building,  
Holmes Hepner & Associates

Tampa-based **Holmes Hepner & Associates Architects** were recognized with a Merit Award for their design of **Suncoast Federal Credit Union's Information Technology Building** in Tampa. This state-of-the-art facility will accommodate approximately 120 employees while providing an enclosure to withstand a category 5 hurricane, it also incorporates a curtain-wall system with reflective laminated

glass that has a low solar heat gain coefficient. [More project images](#)

**Matt Clement of Wannemacher**

**Jensen Architects, Inc.** of St. Petersburg was the recipient of a Merit Award for his design of the **Coopers Point Observation Tower** in Clearwater. The design drew inspiration from the surrounding mangroves and their ability to filter light and conceal surrounding views. [More project images](#)



Coopers Point Observation Tower, Wannemacher Jensen Architects, Inc.



Ybor City Loft, RBK Architects, Inc.

Also receiving a Merit Award was **RBK Architects, Inc.** for their **Ybor City Loft** project. The modern 8-unit condominium is situated in the historic district of Ybor City. The 1930's house was precedent for the building's clean lines, stucco finish, dark metal details and simple yet playful window and door openings. [More project images](#)



475 Condominiums, Clemmons Architecture

The final Merit Award was presented to **Tim Clemmons of Clemmons Architecture** for **475 Condominiums** located downtown St. Petersburg. This seven level building houses 22 residential condominiums with four units per floor on levels two through six while the top floor consists of two penthouses.

[More project images](#)

A new category was added to the design awards this year – The People's Choice Award. A photo gallery of all

projects entered into the design awards were posted at [www.aiatampabay.com](http://www.aiatampabay.com) and the public was invited to vote for their favorite. **Gresham, Smith & Partners Tampa General Hospital Bayshore Pavilion** addition was the project most liked by the People of Tampa Bay. It earned approximately 200 out of more than the 1,100 votes that were cast.



Tampa General Hospital Bayshore Pavilion, Gresham, Smith & Partners

Tampa General Hospital addressed long and short term needs through the addition of a five-level, 364,000 SF, Bayshore Pavillion located on Davis Islands in Tampa, FL. Large windows, open spaces and abundant plant life create a healing environment by bringing the outdoors in. The new addition houses a state-of-the-art emergency and trauma center, cardiovascular and women's center, intensive care unit, medical-surgical patient unit and digestive diagnostic and treatment center. The Bayshore Pavilion addition cut wait times in the emergency department by almost tripling its original size. [More project images](#)

The AIA Tampa Bay Annual Design Awards Program recognizes excellence in architectural design by architects, intern architects and architecture students within the chapter's territory. AIA Tampa Bay is the regional chapter of The American Institute of Architects (AIA) - the professional association for architects and those in the architecture field. AIA Tampa Bay represents 600 members in Hillsborough, Pinellas, Polk, Hernando, Citrus, Sumter and Pasco Counties. In addition to the design awards, the chapter provides a variety of programs including educational, networking, social, competitions, and more.

THANK YOU TO OUR GENEROUS SPONSORS:



PILOT BANK



The American Institute of Architects (AIA) is the professional association for architects and those in the architecture field. AIA Tampa Bay is the regional chapter representing more than 600 architects and architectural intern members in Hillsborough, Pinellas, Polk, Hernando, Citrus, Sumter and Pasco Counties. The AIA provides programs and services including educational programs, design competitions, community service programs and serves as the united voice of the architecture profession. The regional chapter office is located in downtown Tampa at 200 N. Tampa Street, Ste. 100. Find an architect in our [Online Architect Directory](#).

©2008AIA Tampa Bay, Inc. All rights reserved.  
AIA Tampa Bay / 200 N. Tampa St. , Suite 100/ Tampa, FL 33602 / 813-229-3411 (p) / 813-229-1762 (f)  
[dawn@aiatampabay.com](mailto:dawn@aiatampabay.com)